

McLean Community
Players Presents:

PROOF

by: David Auburn

Director: Michael Replogle

Asst. Director: Margaret Berkowitz

Producer: Claire Tso

Winner of the 2001 Pulitzer Prize & Tony Award for Best Play

Performance Dates & Locations:

The Alden Theater

1234 Ingleside Ave. McLean, VA

Fri. Oct. 27 at 8:00pm

Sat. Oct. 28 at 2:00pm & 8:00pm

Sun. Oct. 29 at 2:00pm

The Grange

9818 Georgetown Pike, Great Falls, VA

Fri. Nov. 10 at 8:00pm

Sat. Nov. 11 at 8:00pm

Sun Nov. 12 at 2:00pm

Tickets: McLeanPlayers.org

\$25 for Adults

\$20

for Seniors (65+), Students, McLean
Residents, and groups of 10 or more

Presented by special arrangement with Dramatists Play Service, Inc.

www.McLeanPlayers.org

MYLOS

GRILL

Mylo's Grill in McLean VA is a relaxing, family-owned casual restaurant & bar, specializing in authentic Greek and American dishes.

- Family-Friendly, relaxed atmosphere
- Fantastic brunch served Saturdays & Sundays, 8am-3pm
- Private banquet room for large events and gatherings
- Catering services available
- Outdoor seasonal patio seating

- Tuesday Nights: 1/2 price bottle wine
- Friday Prime Rib Night

Monday-Thursday: 11am - 10pm

Friday: 11am - 10pm (kitchen) / 11pm (bar)

Saturday: 8am - 10pm (kitchen) / 11pm (bar)

Sunday: 8am - 9pm

Chesterbrook Shopping Centre
6238 Old Dominion Drive, McLean VA 22101

703-533-5880 | MylosGrill@yahoo.com | www.MylosGrill.com

FREE APPETIZER

WITH CURRENT SHOW TICKET STUB!

Appetizer must be under \$12.95. Limit one per table.
Offer expires one week from ticket date. Dine-in only

McLEAN COMMUNITY PLAYERS

BOARD OF DIRECTORS

President

Claire Tse

Vice President

Shaun Moe

Treasurer

Maggie Wilder

Secretary

Karen Veltri

Members

Camila Uechi

Jess Rawls

Michael Replogle

Bill Glikbarg

George Farnsworth

Cathy Farnsworth

Bunny Bonnes

Lifetime Honorary Members

Bill Byrnes

Lori Roddy

Terry Yates

Doug Yriart

Mike Scott

PRODUCTION STAFF

Producer.....Claire Tse
Director/Set Design.....Michael Replogle
Assistant Director.....Margaret Berkowitz
Stage Manager.....Camila Uechi
Lighting Design.....Ari McSherry, Lynne Glikbarg
Sound Design.....Adam Parker
Set Construction/ Scenic Painter.....Adrienne Gammons Kammer
Master Builder.....Dave Gammons
Set Design Assistant.....Jane Gammons
Sound Operator.....Claire Tse
House ManagerBunny Bonnes
Publicity.....Cathy Farnsworth
Social Media.....Jess Rawls
Photographer.....Claire Tse, Margaret Berkowitz
Advertising.....Tula Pendergrast
Production Advisor.....Karen Veltri
Playbill Design.....Shayne Gardner
Web Manager.....George Farnsworth
Ushers.....Brent and Linda Stone, Jack and
Dorothy McFadden, Maura Lacy, Mary and Dave Breese,
George and Cathy Farnsworth, Judy Turney, Robin Gold,
Mike Holland, April Sherman, Charles and Peg Kosak, Pat
and Rita Togni, Carol Strachan, Sherry Joslin, Anne Canter,
Samantha Whiteoak, Alice Middleton, Eileen Kastava,
Maggie Wilder

THE CAST

Catherine.....Jess Rawls
Robert.....Dave Wright
Claire.....Hillary Sutton
Hal.....Ernest Fleischer



Jess Rawls (Catherine) is an actor/writer/director originally from the DMV area. She got her BFA from VCU, moved to New York City, and the pandemic brought her back to DC. She's recently been seen as the role of Callie in Reston Community Players' production of *Stop Kiss*, and Ben in McLean Players' production of *American Idiot*. Jess has also written and produced her own work and hopes to do so again soon! She thanks you for coming and hopes you enjoy the show!
@jessarawls



Dave Wright (Robert) This is Dave's first show with MCP and he's extremely excited to be sharing the stage with such incredible actors. Dave's recent credits include: *Don't Dress for Dinner & California Suite* (Providence Players of Fairfax); *Unnecessary Farce & Dinner Party* (VTC); *Red, White & Tuna*, *The Complete Works of William Shakespeare Abridged & Play it Again Sam* (LTA); *The Great American Trailer Park Musical & November* (Dominion). Other notable roles: *Rabbit Hole* (Howie), *Glengarry Glenross* (Levine), *Misery* (Paul), *One Flew Over the Cuckoo's Nest* (McMurphy) & *A Midsummer's Night's Dream* (Bottom). Dave is also the creator/moderator of professional improv troupe *Last Ham Standing*. Most importantly, he would like to thank his wife Angey for her continued support as well as their daughters, Kenzie, Emma & Maddy, for teaching him the true meaning of unconditional love.



Hilary Sutton (Claire) is thrilled to be making her MCP debut and her big return to performing after taking a two-child-one-pandemic-seven-year break from the theatrical stage! Favorite credits include Cora in *Unearthed* (Endstation Theatre Company), Holly in *Foxfire* (Wolfbane Productions), and Mary Jane in *Big River* (ETC). Hilary is the founder of HSL Digital, a marketing and communications consultancy and is the host of the Hustle & Grace podcast. Hilary wishes to thank her husband and daughters, Juan Carlos, Eloise, and Rosalía, for being her biggest cheerleader and little loves. And additional thanks to Mike and Margaret for their incredible encouragement to get back on stage after all this time. For Gram. www.hilarysutton.com



Ernest Fleischer (Hal) Ernie is deeply honored to join the McLean Community Players in their production of *Proof*. It has been five years since he last performed, and he is thrilled to be back in the saddle. Past credits include *Angels in America Pt 2* (Louis), *The Santaland Diaries* (The Elf), and *How the World Began* (Micah). A special thanks to Ernie's housemates, who inexplicably keep letting him take their cars to rehearsal.

MEET THE PRODUCTION STAFF

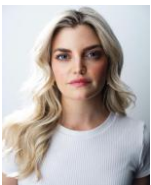
Claire Tse (Producer, Sound Operator, Photographer ~ she/her) is thrilled for her ninth time producing for MCP. She has worked as tech crew and set dressing/props for MCP, VTC, DS, plus LTA for shows including *American Idiot*, *The Dinner Party*, *Seussical the Musical*, *Calendar Girls*, *La Cage Aux Folles*, *The Game's Afoot*, *Barefoot in the Park*, *Last Summer at Bluefish Cove*, *Rumors*, and *1776*. The most important talent needed in our theater community is building positive relationships to expand our multi-generational attraction to continue live performances. Grateful for my many friends, family, and my Jim to support my MCP journeys.



Michael Replogle (Director) Michael's acting credits include theatres such as the Kennedy Center, Mill Mountain, Mac-Haydn, Signature, Round House, Source, Theatre J, Keegan and two national tours. Film and television credits include NBC, ABC, TriStar Pictures, and Pipeline Productions. He has appeared in over 70 stage productions, is an award-winning director, and narrated over 30 audio books and plays.

Some directing credits include, *A Chorus Line*, *Cats*, *Cabaret*, *Oliver!* *My Thing of Love*, *Richard III*, *Much Ado*, *A Thousand Clowns*, and *The Best Man*.

He has served as artistic and/or program director for several theatres in the Washington, D.C. area and is founding artistic director for the City of Fairfax Theatre Company. He also created and taught the Musical Theatre Actors Studio for Fairfax County Public Schools from 2000 to 2020. His students have attended top performance colleges and universities across America, Great Britain and Europe.



Margaret Berkowitz (Assistant Director) is delighted to be making her directorial debut with MCP! She grew up performing at The Alden (*Honk!*, *Cinderella*, *The Music Man*, *Stop The World: I Want*

to *Get Off*, *Life With Father*, *Legally Blonde*) and is an alumna of The University of Oxford and NYU Tisch. Margaret stars as Becca in Fox Searchlight's *Marriage Material* (2019), and can be seen in the upcoming feature films *Things Like This* (2024) and *Him* (2024). Other stage credits include: *Once Upon A Mattress* (*Winifred*), *Dessa Rose* (*Susannah*), *Dog Sees God* (*Tricia*), *...Spelling Bee* (*Logainne*), *Manson's Girls* (*Sharon Tate*). She is thrilled to be working alongside her former Fairfax Academy professor, Michael Replogle, and former classmate, Jess Rawls. Thank you to Mike for the incredible opportunity, and to her amazing parents for their unconditional love & support.

Camila Uechi (Stage Manager) has been involved with MCP as a Board Member since 2021, where she loves thinking up ways to build excitement, fun, and bonding in the MCP community. This is her first production in the SM role.

Adam Parker (Sound Designer) is excited to be working on his second production with MCP. Recent shows include *Unnecessary Farce* (VTC), *Singin' in the Rain* (TAP), *Almost Maine* (TAP) and *Circle Mirror Transformation* (SSS).

Adrienne Gammons Kammer (Set Construction/Scenic Painter) is delighted to be working once again with the McLean Community Players. She has worked with them over the past ten years on shows, such as, *Jesus Christ Superstar*, *A Tuna Christmas*, *Barefoot in the Park* and *Seussical*. She has also worked with Vienna Theater as well as Little Theatre of Alexandria. She began her painting career in Belgium under the tutelage of Master Painter Bonnie St. Claire of the NATO S.H.A.P.E Players. While there she was awarded for her work on set painting and properties management by the US Army Festival of the Arts for the adaptation *The Adventures of Pinocchio*.

Dave Gammons (Master Builder) invaluable last minute help in building and engineering a set he only knew about via second hand, vague hand waving and scribbled crayon his help was greatly appreciated.

Jane Gammons (Set Design Assistant) her first experience in lending a hand and providing props for a play was for *Rally Around the Flag Boys* in Adrienne's senior high school play. Now coming out of retirement she jumped in and became a valuable asset in helping hem and sew the backdrop curtains.

Ari McSherry (Lighting Design) Is thrilled to be back with McLean Community Player's to work with this incredible cast and production team. Ari's 2023 lighting designs included *Monty Python's Edukational Show* and *Unnecessary Farce* at VTC, *The Pirates of Penzance*, at Chalice Theatre, and *The 39 Steps* with MCP at Capital One Center. As theater lighting is a group effort, Ari dedicates this lighting design to his fellow designers for their technical advice and the always hardworking lighting volunteers.

Bunny Bonnes (House Manager) Bunny has been with the McLean Community Players since its formation in the mid-1980s, and is an active member of the Board of Directors. She has been House manager for *American Idiot*, and now *Proof*. She previously served as House Manager for *The Show Must Go On*, *American Idiot*, and now *Proof*.

Jess Rawls (Social Media) has been a professional actor and playwright for 10+ years and is so happy to share this project with you all! Enjoy the show! @jessarawls.

Tula Pendergrast (Advertising) has been involved with MCP for many years as a Board member/Vice President and continues to work in making the community aware of the quality MCP productions. A longtime McLean resident, she is a former ESOL teacher for Fairfax County.

Cathy Farnsworth (Publicity) has enjoyed morphing from a technical editor in her pre-retirement life to a publicist for MCP.

Shayne Gardner (Playbill Designer) has been involved in community theater since her debut at 7, with almost 30 years' experience in Northern Virginia. She is a past board member of MCP, and has done just about every job in theater - producer, director, stage manager, set construction, props, painting, - you

name it! Since retiring, Shayne has focused on acting, and is currently appearing in *On Golden Pond* at VCT.

George Farnsworth (Web Manager) has been involved with community theatre since 1982. George has tried acting (*Cuckoo's Nest* for RCP, *Rumors* and many others for MCP), and directing (*Vanities* for GFP).

Special Thanks to Chelsea Frankoski for prop assistance.



Monthly Opera Night!
at 6:30 PM

\$200 PER COUPLE + tax, includes 1 bottle of wine (\$50 is donated to the performers)

FEATURING
Enzo Baldanza, a 17 year old violinist who will entertain you while you dine,
Darcy Monsalvo, soprano,
Frank Conlon, Pianist and Tenor, Israel Lozano

OPERA MUSIC FROM MANY DIFFERENT COUNTRIES!

Your choice of full course dinner!
Come and enjoy our fresh, authentic Italian food!

the Italian OVEN
6852 Old Dominion Drive,
McLean, VA
703.891.8690
theitalianovenmclean@gmail.com



McLean ANIMAL HOSPITAL

New Doctor's Office Hours
Daily 7 am - 8 pm, Sat. 8 am - 4 pm
Sun. 8 am - 1 pm Emergency Only

Hospital Open
Daily 7 am - 8 pm, Sat. 8 am - 4 pm, Sun. 8 am - 1 pm.

Emergency Services 703-281-5121
1330 Old Chain Bridge Road
McLean, VA 22101

703-356-5000 • FAX 703-356-5212
www.mcleanah.com
mcleananimalhospital@mcleanah.com



DIRECTOR'S NOTES

Thank you for coming to see our production of *Proof*. So happy you made it! First some background on this piece. *Proof* hit Broadway in October of 2000 and promptly won The Drama Desk Award, the Pulitzer Prize and Tony Award for Best Play.

By 2004 the movie was released starring Anthony Hopkins, Gwyneth Paltrow and Jake Gyllenhaal to less acclaim due to changes in the script. If you've only seen the film then you've not actually seen *Proof*.

This play has been on my short list of directing projects for a while. It is a story dealing with family, truth, gender, mental health and death. It is interesting to explore how each character tries to do the right thing and support each other, yet often these actions can come off as self serving. Also there are no happy or sad endings, just the very real hope that tomorrow may be better. Enjoy!

Michael Replogle, SAG/AFTRA

PRODUCERS' NOTES

MCP is excited to showcase our *Proof* actors & production team. I appreciate our multigenerational cast and technical crew dedication to produce this dramatic math and mental health story, with timing humor lines, to life. Our production crew's talent elevate our cast's energetic performances with intentional set dressing and emotional atmosphere at the Alden Theatre plus The Grange stage; our publicity team involved our McLean community merchants and DMV patrons. Many Thanks with appreciation to ArtsFairfax for grant, McLean Community Center staff & managers for rehearsals support, Alden Theatre staff as theater partners, and our loyal audience and company members for helping make this show a success! Cheers & enjoy the show!

-Claire L. Tse

Amadeus Concerts

Concerts include a preview "prep talk" at 3:15 PM and a post-concert reception with the artists. Tickets available at the door for \$45; youth and active-duty military admitted free of charge.

Join us for our upcoming concerts

Opera Celebration

Sunday, November 12, 2023 at 4 pm, St. Francis Episcopal Church, Great Falls, VA

Cooperstown String Quartet

Sunday, February 18, 2024 at 4 pm, Great Falls Grange, Great Falls, VA

Baumgarten Trio

Sunday, April 14, 2024 at 4 pm, St. Francis Episcopal Church, Great Falls, VA

Amadeus Strings

Sunday, May 12, 2024 at 4 pm, St. Francis Episcopal Church, Great Falls, VA

A. Scott Wood, conductor

www.amadeusconcerts.com • 703.759.5334



CAFÉ TATTÍ

French European Cuisine
6627 Old Dominion Drive
McLean Mall, VA 22101

For Reservations
703-790-5164 Tel
Cafetatti@yahoo.com

www.cafetatti.com

Since 1981
Your Hosts
Yiannis & Angie
Skliiras



McLEAN HARDWARE

(703) 356-5496

(703) 556-9145 fax

1445 Chain Bridge Rd.
McLean, VA 22101
mcleanhardware@verizon.net



A place for wine lovers and enthusiasts

Free Wine Tastings

Fridays 3-7 pm
Saturdays 12-4 pm

Wine Classes
Special Events
Wine Dinners

Visit us at www.cbc.com
for our event schedule

Chain Bridge Cellars
1351 Chain Bridge Road
in McLean's Salona Village, across from Lidl

www.cbcwine.com

LOCAL THEATER REFERENCE GUIDE

ACCT	Aldersgate Church Community Theatre*	NS:	NextStop Theatre Company
AFYP	Acting for Young People	PCP:	Port City Playhouse
BCT:	Bowie Community Theatre*	PPF:	Providence Players of Fairfax*
CCP:	Chevy Chase Players*	PTP:	Port Tobacco Players*
CFTC	City of Fairfax Theatre Company*	PWLT:	Prince William Little Theatre*
CPA:	Colonial Players of Annapolis*	RCP:	Reston Community Players*
CCRT	Castaways Repertory Theatre*	RLT:	Rockville Little Theatre*
CT	Chalice Theatre	RMT:	Rockville Musical Theatre*
DTC:	Damascus Theatre Company*	RTP:	Rooftop Productions*
DS:	Dominion Stage*	SMP:	St. Mark's Players*
ESP:	The Elden Street Players	SCT:	Stagecoach Theatre
FCT:	Fauquier Community Theatre*	SP:	Sterling Playmakers*
GAC.:	Greenbelt Arts Center*	SSS:	Silver Spring Stage*
HBP:	Hard Bargain Players*	ST:	Silhouette Stage
II:	Ibiala International	TAP:	The Arlington Players*
KAT:	Kensington Arts Theatre*	TCP:	Tantallon Community Players*
LMP:	Laurel Mill Playhouse*	TFT:	Taking Flight Theatre Company
LTA:	Little Theatre of Alexandria*	TTL:	The Theatre Lab
MCP:	McLean Community Players	VTC:	Vienna Theatre Company
MET:	Maryland Ensemble Theatre	WT:	Workhouse Theatre
MVCC	Mount Vernon Community Children's Theatre	ZS:	Zemfira Stage

*Indicates a member of the Washington Area Theatre Community Honors

COMMUNITY PARTNERS

McLean Community Players is proud and grateful to partner with:



Traveling
Players

